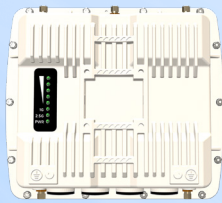
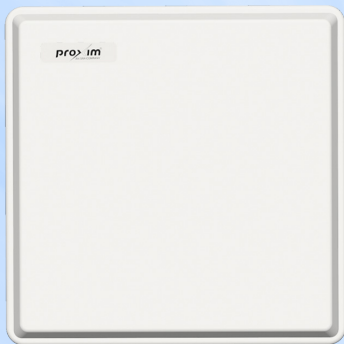


Stratum™ X5 - 6GHz



Product Snapshot

The 6 GHz Stratum™ X5 is a high-performance point-to-point wireless radio. The 6 GHz MIMO 4x4 radio enables point-to-point connectivity that offers over 1.5 Gbps throughput, making it perfect for high-capacity backhaul applications.

The 4x4 MIMO radio offers two significant benefits :

- In MIMO 4x4:4 mode, a 20MHz channel will double the throughput compared to the typical MIMO 2x2:2 point-to-point systems available today.
- In MIMO 4x4:2 mode, antenna diversity enables two mirrored data streams that improve radio stability in harsh environments.

Other Features Include :

- Throughput >1.5 Gbps TCP and 1.8 Gbps UDP
- Wide Band Radio - 5.925 - 7.125 GHz
- 2.5 Gbps Ethernet with optional 10 Gbps SFP+ optical transceiver cage
- AES 128-bit encryption is upgradeable to 256-bit
- Full tilt and swivel mounting kit included.

Integrated Antenna and Connectorized Models

The SX5-2042A includes an integrated quad polarity panel antenna.

Model SX5-2040A is a connectorized unit purposed build for external quad polarity antennas where specific antenna patterns or gain adjustments are needed.

Advanced Interference Management

Proxim ClearConnect™ combines multiple dynamic technologies and delivers the best interference management solution.

Secure Management Options

Management options include Proxim BlueConnect™; our Bluetooth-enabled mobile management application; TLS 1.3 web GUI, SSH 2.0 CLI, and SNMP v3 for ProximVision Advanced or other network management solutions.

Rugged Reliability

Stratum X5 uses an IP67-rated metal enclosure to ensure years of reliable service in harsh environments, including high winds, high salt, and temperature extremes.

Specifications

PRODUCT MODELS

SX5-2040A-WD	Stratum X5, 6 GHz All-purpose unit (BSU single or SU), 1+ Gbps, RP-SMA - WD PoE	PN: 906-00009
SX5-2042A-WD	Stratum X5, 6 GHz All-purpose unit (BSU single or SU), 1+ Gbps, 19° quad pol antenna - WD PoE	PN: 906-00010

LICENSES

SX5-204xA-AES256-UPG	Stratum X5, 6 GHz All-purpose unit AES 256 license upgrade	PN: 997-00064
----------------------	--	---------------

INTERFACES

WIRED ETHERNET	One auto MDI-X RJ45 2.5 Gbps Ethernet with PoE in One auto MDI-X RJ45 1 Gbps Ethernet with PoE out
EXTENSION WIRELESS PROTOCOL	One SFP+ port for Fiber or Copper 10 Gbps SFP module WORP® (Wireless Outdoor Router Protocol)

RADIO & TX SPECS

MIMO	2x2:2 and 4x4:4
MODULATION	OFDM BPSK-QAM4096
FREQUENCY	SX5-2040A: 5.925 - 7.125 GHz (Subject to Country Regulations) SX5-2042A: 5.925 - 6.425 GHz (Subject to Country Regulations)
CHANNEL SIZE	20, 40, 80 and 160 MHz (80+80 MHz via future upgrade)
TX POWER	Up to 24 dBm (dual chain) or 27 dBm (quad chain)
TX POWER CONTROL	0 - 21 dB, in 1 dB steps. Automatic TPC with configurable EIRP limit

	20 MHz	40 MHz	80 MHz
TX POWER	MCS0:	MCS0:	MCS0:
2 RF	24	24	24
4 RF	27	27	27
	MCS13:	MCS13:	MCS13:
2 RF	17	17	17
4 RF	20	20	20
RX SENSITIVITY (Per=10 ⁻⁶)	MCS0:	MCS0:	MCS0:
	-95	-90	-90
	MCS13:	MCS13:	MCS13:
	-63	-56	-56
Throughput - Dual Stream	298 Mbps	565 Mbps	1095 Mbps
Throughput - Quad Stream	573 Mbps	1074 Mbps	1787 Mbps
OTHER	Dynamic Channel Selection (DCS) based on interference detection,		
	Automatic Transmit Power Control (ATPC) with EIRP limit support		

ANTENNA

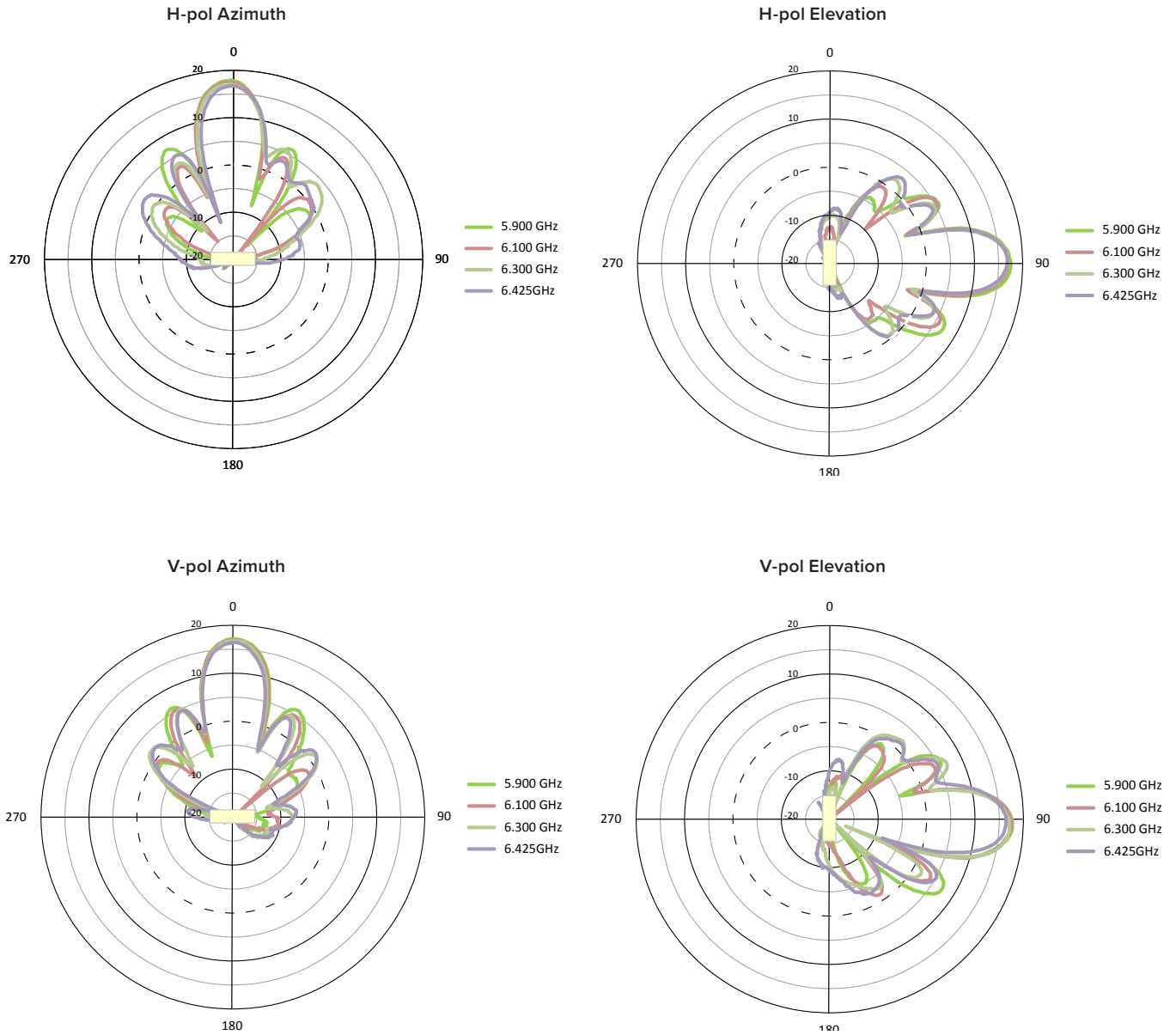
SX5-2040A

Four RP-SMA Connectors

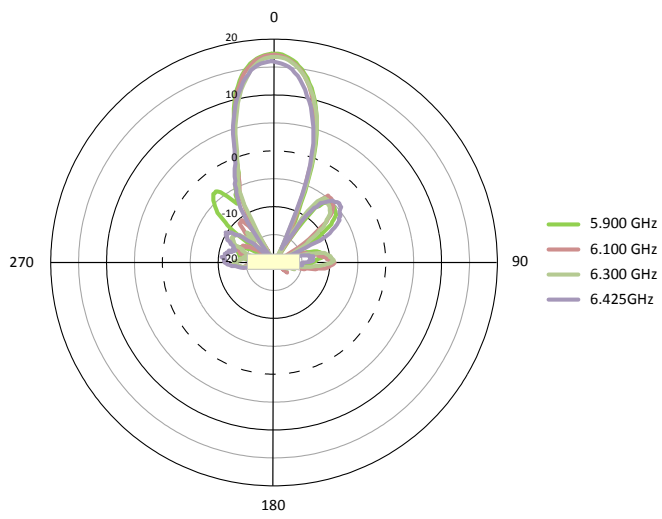
SX5-2042A

Integrated 4x4 MIMO 18 dBi Quad Polarized 19 degree Panel Antenna

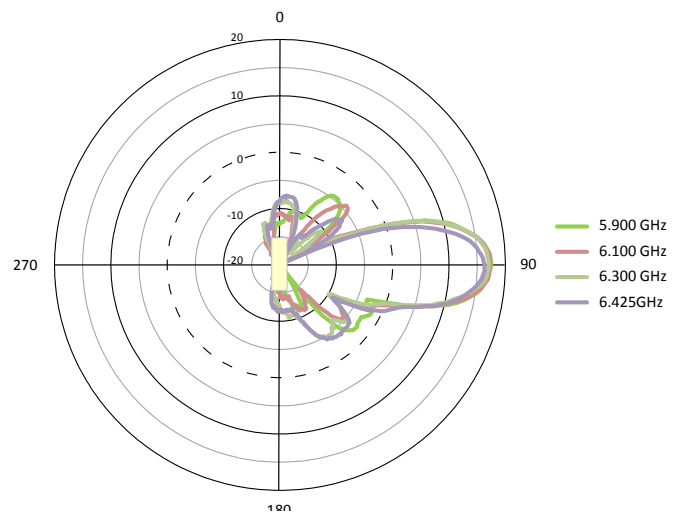
ANTENNA PATTERNS (Sector Mode)



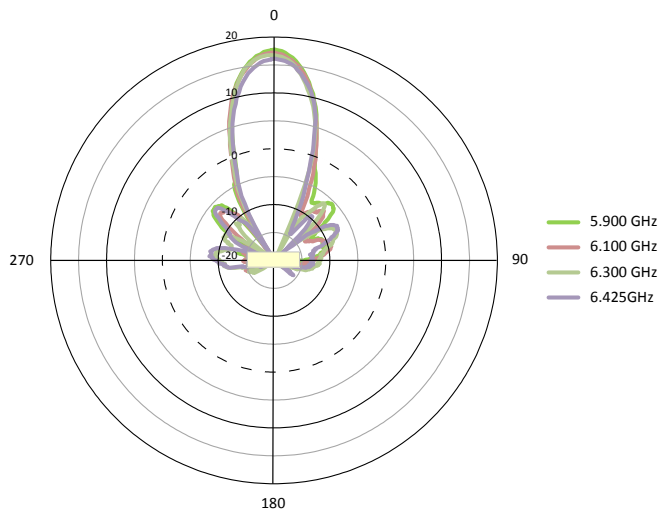
+45-pol Azimuth



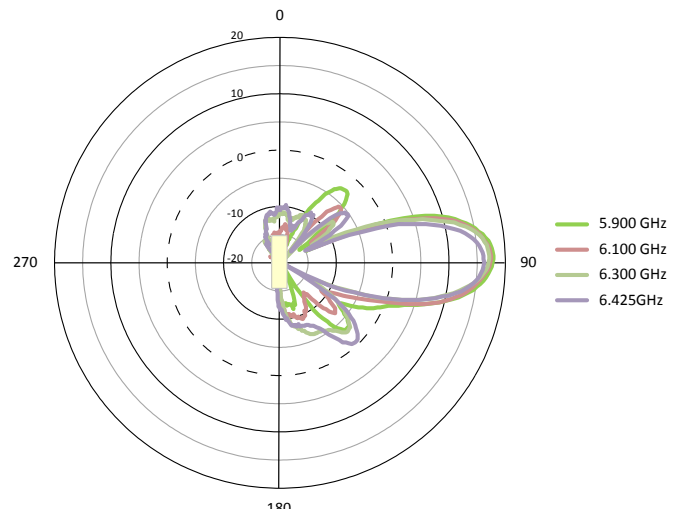
+45-pol Elevation



-45-pol Azimuth



-45-pol Elevation



MANAGEMENT

BLUETOOTH LOW ENERGY	Proxim BlueConnect™
REMOTE	Telnet and SSH 2.0, Web GUI and TLS 1.3, TFTP, SNMP v1/v2c/v3
OTHER	Syslog, SNTP and local time, Spectrum analyzer
Multi-Language Support	Web Interface available in English, French, Spanish and Chinese

SECURITY

ENCRYPTION	AES 128 (AES 256 via license upgrade)
AUTHENTICATION	Internal MAC Address Control List, Radius based Authentication (with VLAN and QoS provisioning)

NETWORK

MODES	Bridging, (Routing to be added by future firmware update)
IP STACK	IPv4 and IPv6 simultaneously
VLAN	802.1Q: Management VLAN. Transparent, Access, Trunk and Mixed mode. QinQ double tagging

POWER

802.3at/bt compliant

POWER CONSUMPTION

14 to 17 W max in MIMO 2x2 mode
22 to 25 W max in MIMO 4x4 mode

ENVIRONMENTAL SPECS	OPERATING TEMPERATURE	STORAGE TEMPERATURE	HUMIDITY - IP RATING	WIND LOADING
	-40° to 60°C	-50° to 70°C	100% relative humidity	180 km/h (112.5 mph)
	-40° to 140° Fahrenheit	-58° to 158° Fahrenheit	IP67	
PHYSICAL SPECS	DIMENSIONS (Shipping Carton - 2 Units)	DIMENSIONS UNPACKAGED	WEIGHT (Shipping Carton - 2 Units)	WEIGHT (UNPACKAGED)
SX5-2040A	388 x 346 x 428 mm 15.27 x 13.62 x 16.85 in	250 x 220 x 62 mm 9.84 x 8.66 x 2.44 in	10.0 Kg 22.04 lbs	1.6 Kg 3.53 lbs
SX5-2042A	415 x 415 x 485 mm 16.34 x 16.34 x 16.85 in	371 x 371 x 97 mm 14.60 x 14.60 x 3.82 in	13.8 kg 30.42 lbs	3.0 kg 6.61 lbs

SAFETY STANDARDS

IEC 62368-1:2018
EN IEC 62368-1:2020+A11:2020
BS EN IEC 62368-1:2020+A11:2020
UL 62368-1:2019, CSA C22.2 No. 62368-1:19

CERTIFICATIONS

EMC/EMI:	CFR47, FCC part 15, Subpart B (class A) ICES-003 issue 7:2020 (class A) EN 55032:2015+A1:2020, EN 55035:2017+A11:2020, EN 301 489-1, EN 301 489-17, EN 301 489-19
----------	---

PACKAGE CONTENTS

- One Stratum SX5-2040A unit with four RP-SMA connectors or One Stratum SX5-2042A with integrated antenna
- Three (SX5-2040A) or One (SX5-2042A) RP-SMA weather proofing caps
- Two M25 weather proofing cable glands
- One power injectors and country specific power cords
- One full axis mounting kits
- One Grounding kits
- One Quick Installation Guides

MTBF & WARRANTY

>450 000 hours, 2-year warranty, ServPak Extended Support available.

ABOUT PROXIM WIRELESS :

Proxim Wireless is a global leader in advanced wireless broadband and WiFi solutions that deliver high performance and high availability communications.

Celebrating 40 years of pioneering wireless solutions, Proxim is recognized for unparalleled reliability, superior performance, and drive for innovation.

© 2024 Proxim Wireless Corporation. All rights reserved. Proxim is a registered trademark and the Proxim logo is a trademark of Proxim Wireless Corporation. All other trademarks mentioned herein are property of their respective owners. Specifications are subject to change without notice.