

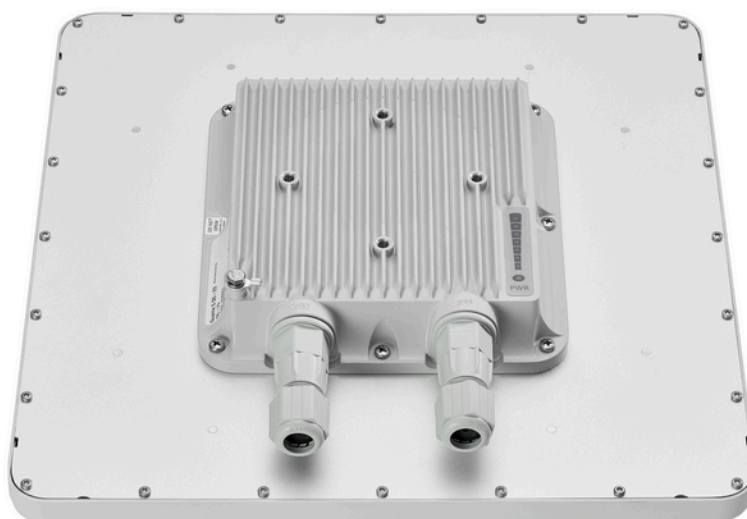
## Quanta 5 Q5-26

Description	Quanta 5 Q5-26, 5 GHz point-to-point unit, net throughput up to 650 Mbps, integrated dual-pol antenna, 26 dBi, 8x8 deg
Net throughput	up to 650 Mbps
Recommended distances	up to 60 km
Radio technology	MIMO 2x2 (SC-FDE)
Modulation coding schemes	from QPSK 1/4 to QAM256 7/8
Transmit power	from -10 to 27 dBm*, step 1 dBm
Receiver sensitivity	down to -101 dBm
Frequency range	4900-6000 MHz
Channel width	3.5, 5, 7, 10, 14, 15, 20, 28, 30, 40, 50, 56 MHz
Center frequency adjustment step	1 MHz
Duplex scheme	TDD
Antenna	26 dBi
Wired Interfaces	1x Combo port GigabitEthernet/SFP

\*May be limited by regional EIRP restrictions

## Quanta 5 **Q5-26**

Consumption	up to 15 W
Power options	90-240 VAC ~ @ 50/60 Hz, +-43..56 VDC
Outdoor Unit (ODU)	350 x 350 x 71.5 mm, 2.3 kg
Part Number Example Q5-26	
Packing List	<ul style="list-style-type: none"> <li>- Outdoor unit Q5-26 - 1 pcs.</li> <li>- Power Supply IDU-CPE-G(24W) - 1 pcs.</li> <li>- Power Cord - 1 pcs.</li> <li>- Cable Gland V1 - 1 pcs.</li> <li>- Cable Gland V2 - 1 pcs.</li> <li>- Standard RJ-45 connector - 1 pcs.</li> <li>- Shielded RJ-45 connector - 1 pcs.</li> <li>- RJ-45 Plug Cap - 1 pcs.</li> <li>- MONT-KIT-85 Mounting kit - 1 pcs.</li> <li>- Quick Start Guide - 1 pcs.</li> </ul>



# Quanta 5 Q5-26

## Features

### RADIO

- ▶ DFS
  - ETSI/FCC, including radar detection (including co-channel CAC) and adaptivity
- ▶ Instant DFS
  - background spectrum monitoring by both Master and Slave terminal units
  - seamless channel change
- ▶ Automatic Bitrate Control
- ▶ Automatic Transmit Power Control
- ▶ Channel Time Adjustment

### NETWORKING

- ▶ Built-in full-fledged L2 switch supporting
- ▶ Transparent L2 transport for Ethernet traffic

### MANAGEMENT FEATURES

- ▶ Various Management Protocols: HTTP, SSH, HTTPS, Telnet, SNMP v1/2c/3 (MIB-II and proprietary MIBs)
- ▶ Graphical User Interface
- ▶ LED Indication: power status, wireless and wired link status, signal level
- ▶ Antenna alignment tool
- ▶ Automatic software update
- ▶ Online monitoring with proprietary EMS NEXT

### QUALITY-OF-SERVICE

- ▶ 8 priority queues
- ▶ IEEE 802.1p support
- ▶ IP DiffServ support

# Quanta 5 Q5-26

## Features

### ENVIRONMENTAL

- ▶ Outdoor Units:
  - operating temperature range  $-40..+60\text{ }^{\circ}\text{C}$ ,  
(can be extended to  $-55..+60\text{ }^{\circ}\text{C}$ , models with "t"  
index in PN), 100% humidity, condensing
  - IP66/IP67 compliant water and dust protection
- ▶ Indoor Unit:  $0..+40\text{ }^{\circ}\text{C}$ , 95% humidity, non-condensing

### SECURITY FEATURES

- ▶ Storm/flood protection
- ▶ Password protection
- ▶ Secure command-line access via SSH protocol

### MAC

- ▶ VLAN 802.1q

### STANDARD COMPLIANCE

- ▶ Safety:  
EN/IEC 62368-1:2014, UL 62368-1:2014
- ▶ Radio:  
EN 301 893 v.2.1.1, EN 302 502, v.2.1.1, FCC part 15.407
- ▶ EMC:  
ETSI EN 301 489-1, ETSI EN 301 489-17, FCC Part 15 Class B
- ▶ RoHS:  
RoHS3 Directive 2015/863/EU (pending)